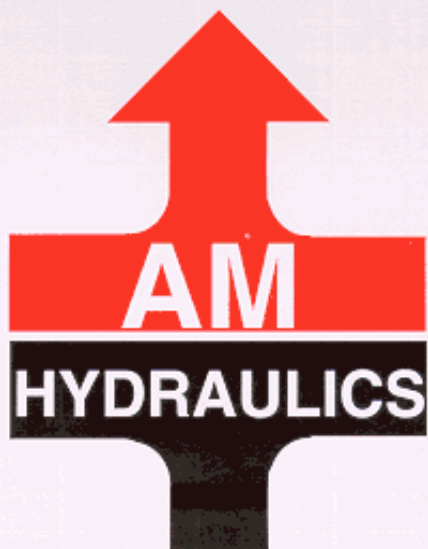
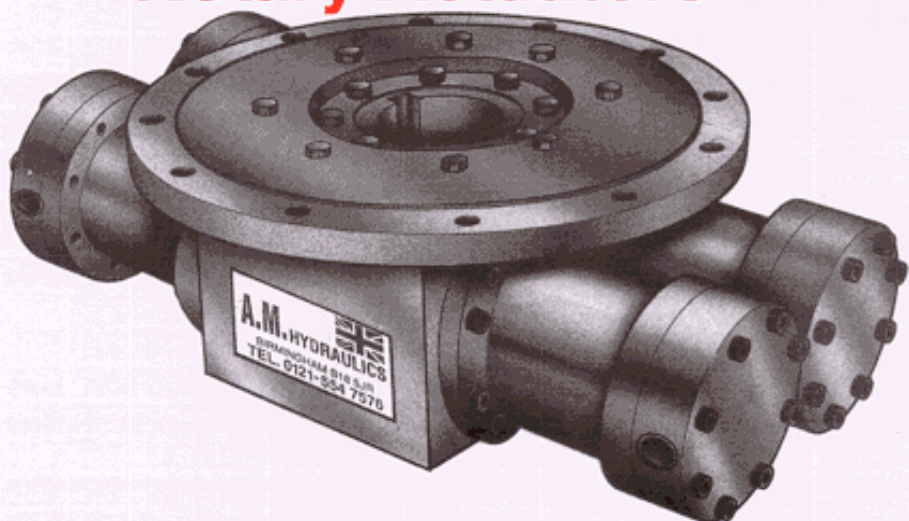


Keeping Industry moving



**AMHD Series  
Heavy Duty Hydraulic  
Rotary Actuators**



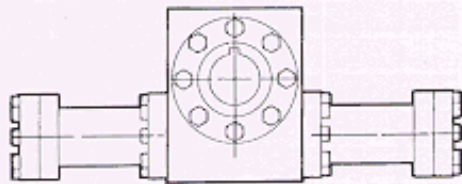
Keeping  
Industry moving



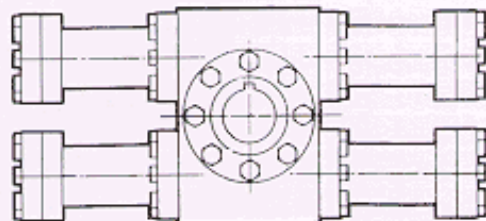
A.M. HYDRAULICS  
Unit 3, Hockley Brook Trading Estate  
South Road Avenue, Hockley  
Birmingham B18 5JR  
Telephone: 0121-554 7576  
Fax: 0121-554 4640

**DATA SHEET AMHD/A**

## Single Rack



## Twin Rack



The A.M.H.D. series of heavy duty hydraulic rotary actuators are designed to cope with applications where adverse conditions may prevail as in the steel, marine, offshore mining and such nuclear industries.

These non - tie rod actuators provide a dependable and controlled angular motion with options of cushioning and or adjustable end stops.

There are numerous configurations of mountings available, depending on the application. A.M. Hydraulics engineers would be pleased to assist in the selection of the most suitable type for your requirements.

A hole with a single keyway through the driving pinion is supplied as standard and is of ample proportion to take the maximum operating torque of the actuator. A shaft is offered as an alternative option should it be more suitable for the application.

In addition to the standard models offered in this catalogue A.M. Hydraulics have the design and manufacturing capability to supply actuators for special applications.

Product improvement is a basic A.M. Hydraulics policy — all dimensions are subject to change without notice. Certified dimensional prints available with order

**Keeping  
Industry moving**



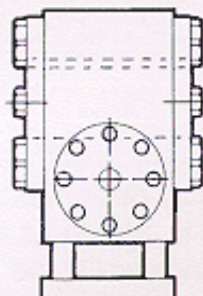
A.M. HYDRAULICS  
Unit 3, Hockley Brook Trading Estate  
South Road Avenue, Hockley  
Birmingham B18 5JR  
Telephone: 0121-554 7576  
Fax: 0121-554 4640

**DATA SHEET AMHD/B**

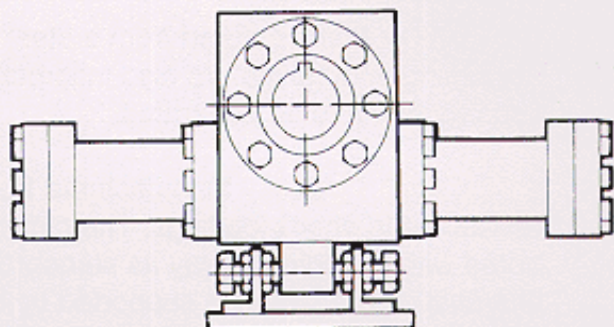
# Typical Mountings

Medium Duty Hydraulic  
Rotary Actuators

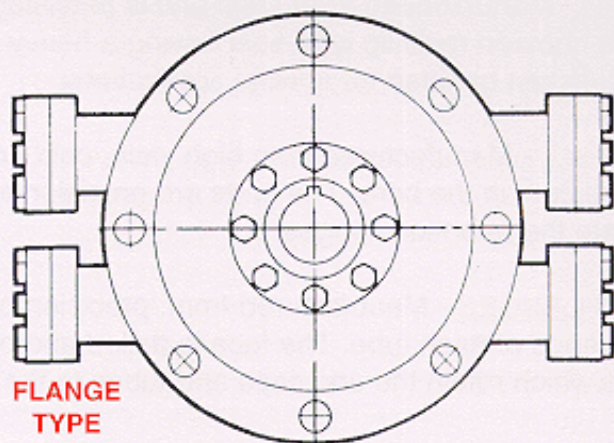
# AMHD Series



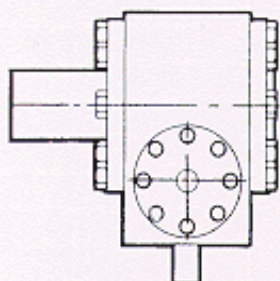
FOOT TYPE



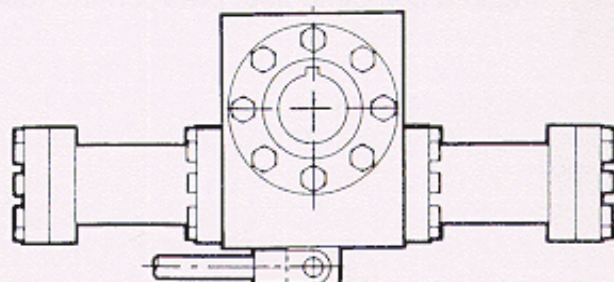
SCREW TYPE



FLANGE  
TYPE



LUG TYPE



CLEVIS TYPE

Product improvement is a basic A.M. Hydraulics policy ... all dimensions are subject to change without notice. Certified dimensional prints available with order

Keeping  
Industry moving



A.M. HYDRAULICS  
Unit 3, Hockley Brook Trading Estate  
South Road Avenue, Hockley  
Birmingham B18 5JR  
Telephone: 0121-554 7576  
Fax: 0121-554 4640

DATA SHEET AMHD/C

**HOUSING** - Manufactured from a steel weldment stress relieved prior to machining. Mountings are also incorporated in the weldment unless the application requires it to be separated.

**RACK AND PINION** - Manufactured from high tensile steel to give maximum resistance to shock loadings. The pinion has teeth of heavy duty design and is bored with a single keyway as standard. A shaft configuration is offered as an alternative. The pinion is supported by heavy duty roller bearings whilst the rack is supported by bronze bearings.

**PISTON HEAD** - Manufactured from steel and is precision machined. It's design incorporates a chevron multi lip type seal having a heavy bronze support bearing. Alternative seals can be fitted for special applications.

**CYLINDER TUBE** - Manufactured from high yield, cold drawn seamless steel tube and honed to 0.2um in the bore. The ends are precision turned and screwed to positively locate the retention flanges.

**RETENTION FLANGES** - Manufactured from, precision bored and screwed to mate with the ends of each tube. The face is drilled and or tapped to suit the securing bolts which retain the end caps and tubes to the housing.

**END CAPS** - Precision machined from steel and having ample length spigots to give positive alignment and to accommodate the "O" ring and back-up ring resulting in a complete seal between the tube and end cap.

Product improvement is a basic A.M. Hydraulics policy ... all dimensions are subject to change without notice. Certified dimensional prints available with order

Keeping  
Industry moving



A.M. HYDRAULICS  
Unit 3, Hockley Brook Trading Estate  
South Road Avenue, Hockley  
Birmingham B18 5JR  
Telephone: 0121-554 7576  
Fax: 0121-554 4640

DATA SHEET AMHD/D